

# TOSHIBA

Leading Innovation >>>



COLLABORATION



## Meeting

### Meet-Me Conferencing and Web Collaboration

Toshiba's Meeting application provides dial-in audio conferencing and web collaboration with scheduling, desktop sharing, conference recording, usage reporting, and more. Meeting is web-based so it's easy to set up conferences and collaboration sessions from anywhere. Users can attend a web collaboration session from anywhere via the network and dial in to an audio conference from anywhere via the public switched telephone network (PSTN).

### Efficient Communication at Your Fingertips

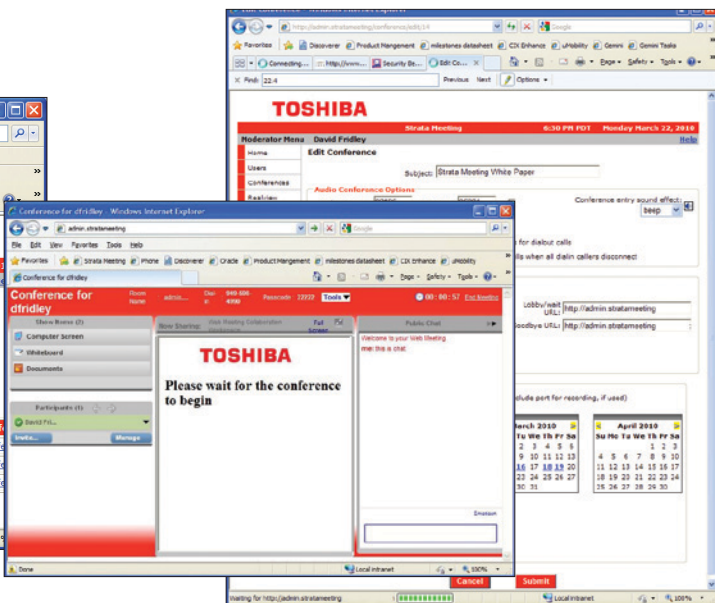
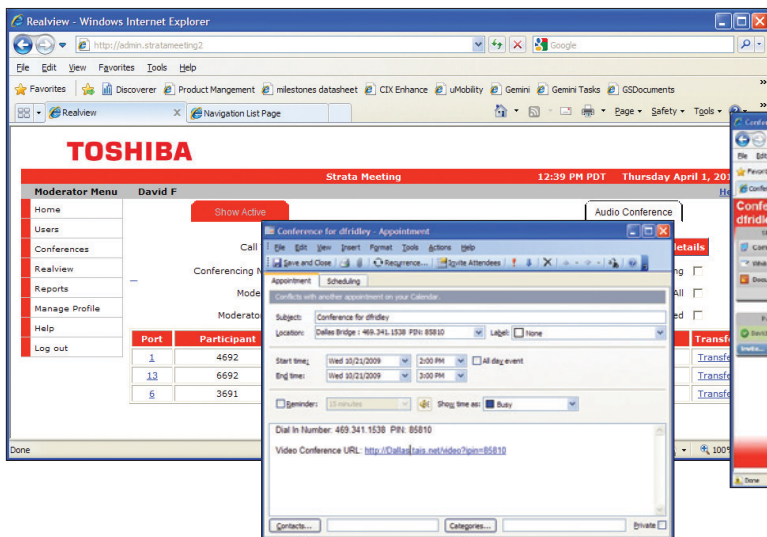
Meeting integrates with Toshiba business communication systems to provide many useful functions and advantages:

- **Reservation-less and Scheduled Meet-Me Conferencing**—enables conferences to start quickly and can be organized easily and flexibly.
- **Web-based Desktop Sharing**—enables attendees to see and share documents, presentations and conversations in the meeting.
- **Outlook Calendar Integration**—allows meetings to be easily scheduled and invitations distributed to all participants.
- **Web User Interface for Moderators**—enables moderators to schedule conferences.

- **Conference View Feature**—shows moderators who's in their conference and enables the management of individual participants.
- **Web-based Reporting**—enables managers to have a view into the impact of audio conferences in their business.
- **Audio Recording Capabilities**—enables audio conferences to be recorded for later playback or archived for record retention.
- **Flexible Configuration From 8 to 24 Ports**—provides cost-effective small conferencing systems for small and medium size businesses with room to grow and expand.

### Higher Function and Lower Cost

Strata Meeting is designed for small to medium-size businesses and branches or departments of larger businesses that need scheduled or on-demand dial-in conferences and/or web collaboration sessions with employees, vendors, partners, and customers and don't want to pay expensive per-user monthly service fees. Meeting makes an ideal companion application to Toshiba IP business communication systems.



## SPECIFICATIONS

<b>Capacities</b>	For voice conferencing, minimum 8 ports, expandable to 16 or 24 ports via licensing upgrade. For voice and web collaboration, available in 8 port configuration. Each port supports one active participant in a conference/collaboration session. Up to 4 channels of audio conference recording.		
<b>Configuration Options</b>	Audio Ports	Web Ports	Recording Ports
<i>Audio Only</i>	8, 16, 24	0	1, 2, 3, or 4
<i>Audio and Web</i>	8	8	1, 2, 3, or 4
<b>Chassis Measurements</b>	Width	Height	Depth
<i>Metric</i>	305 mm	79 mm	216 mm
<i>English</i>	12.0 in.	3.1 in.	8.5 in.
<b>Power Supply Unit (PSU)</b>	Built-in		
<b>Primary AC Power</b>	Input AC 115VAC, 6.0 amps max. AC Freq. Single-phase amps, (48Hz - 62Hz).		
<b>Power Backup</b>	An Uninterruptible Power Supply (UPS) is required for power backup similar to the ones used for computer systems and networking equipment.		
<b>Cooling</b>	1 chassis fan, 1 power supply fan		
<b>Operating Humidity</b>	20~80% relative humidity without condensation		
<b>Operating Temperature</b>	39°F ~104°F (4°C ~40°C)		
<b>Compliance</b>	Safety: UL EMC: FCC Part 15 Class A (Subpart J)		
<b>Chassis Installation</b>	Desktop		
<b>USB Ports</b>	4		
<b>Data Storage Media</b>	160GB Hard Disk		
<b>CPU</b>	Intel ATOM 330 1.6 Ghz processor		
<b>Memory</b>	2 GB DRAM		
<b>Operating System</b>	CentOS Linux		
<b>Network Interface Connection</b>	1 10/100BaseT Network Interface Connection		
<b>Connection to Telephone System</b>	1 Ethernet IP connection through a network switch to an IP interface in a Strata CIX40, CIX100, CIX200, CIX670 or CIX1200, or IPedge™ EP System (this is a built in application on IPedge EC and EM systems.)		
<b>Remote Access</b>	Remote access via the network using web browser.		
<b>Web Browser Capability</b>	Internet Explorer 7 and above, Firefox, Mac Safari.		
<b>Standard Applications</b>	Audio Conferencing. Scheduled or on-demand. Optional Applications Web collaboration. Scheduled or on-demand.		

**TOSHIBA**  
Leading Innovation >>>



Toshiba America Information Systems, Inc.  
Telecommunication Systems Division

9740 Irvine Blvd., Irvine, CA 92618-1697  
To locate an Authorized Dealer, call: (800) 222-5805  
National Accounts (800) 234-4873  
www.telecom.toshiba.com

© 2012 Toshiba America Information Systems, Inc. All product, service and company names are trademarks, registered trademarks or service marks of their respective owners. Information including without limitation specifications, availability, content of services, and contact information is subject to change without notice.

Literature Order #:TSD-BOBW-BR-Meeting-VC/4500169